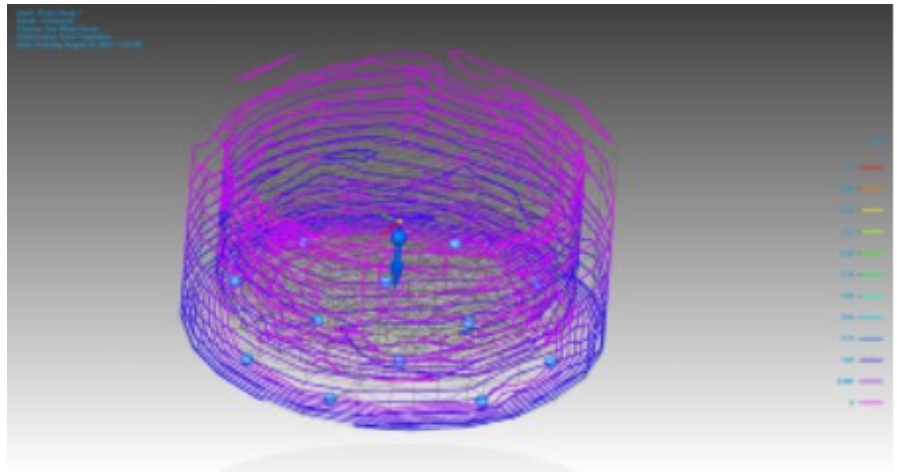
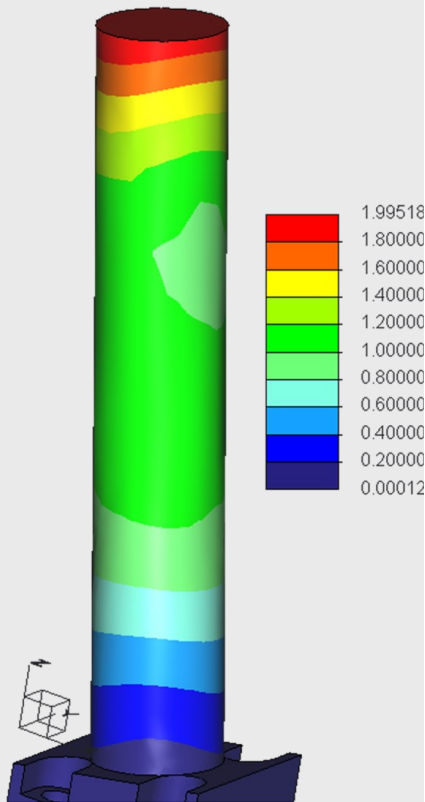
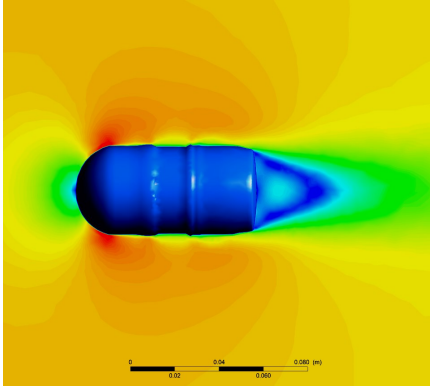
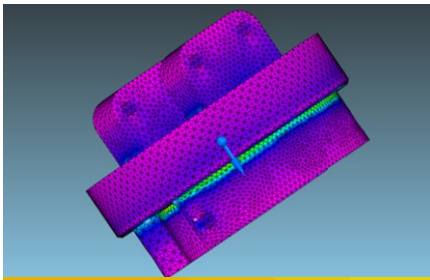




## Modeling and Simulation

Orbital Research has two high performance computing workstations for running high fidelity Multiphysics Simulations. Purchased in 2017 and 2018 they are capable of performing with 10 cores at 4.4 ghz and 32 cores at 3.0 ghz respectively. They are both equipped with top end M.2 EVO Pro hard drives for maximum speed. Orbital Research owns ANSYS Mechanical Enterprise (all structural, rigid dynamics, and thermal modules) and ANSYS Fluids Premium (Fluent and CFX) and will rent ANSYS Maxwell for this project. Having the other solvers available adds significant fidelity to magnetic models by enabling exploration of cooling phenomena and thermal performance.



**Phone:** 216.649.0399  
216.649.0378

**Fax:** 216.649.0347

**Cleveland Headquarters:**  
4415 Euclid Avenue  
Suite 500  
Cleveland, OH 44103

**Email:**  
[info@orbitalresearch.com](mailto:info@orbitalresearch.com)

**Website:**  
[www.orbitalresearch.com](http://www.orbitalresearch.com)